

# Medical Equipment Catalogue

March 2025

for Ontario Health atHome areas  
**North East**  
**North West**

---

## Contents

---

<b>Contact Information .....</b>	<b>3</b>
<b>Important Notes: .....</b>	<b>4</b>
<b>Pre-Screening Equipment Information .....</b>	<b>5</b>
<b>Canes .....</b>	<b>6</b>
<b>Walkers &amp; Attachments .....</b>	<b>6</b>
<b>Rollator Walkers.....</b>	<b>8</b>
<b>Wheelchairs.....</b>	<b>11</b>
<b>Ramps .....</b>	<b>14</b>
<b>Wheelchairs Accessories.....</b>	<b>15</b>
<b>Seating .....</b>	<b>17</b>
<b>Transfer Aids.....</b>	<b>19</b>
<b>Patient Lift and Slings .....</b>	<b>21</b>
<b>Bedroom Aids .....</b>	<b>24</b>
<b>Therapeutic Surfaces .....</b>	<b>27</b>
<b>Bathroom Aids .....</b>	<b>29</b>
<b>Toileting Aids .....</b>	<b>31</b>
<b>Treatment Modality .....</b>	<b>35</b>
<b>Bariatric Equipment.....</b>	<b>39</b>
<b>Categories of Delivery .....</b>	<b>43</b>
<b>Delivery Information/ Same Day Availability .....</b>	<b>44</b>

## Medigas Contact Information

---

### MEDIGAS CONTACT NUMBERS:

**North East:** Toll Free: 1-855-560-8035

Fax: 1-705-566-4140

**North West:** Toll Free: 1-833-674-4205

Fax: 1-807-344-6358

## Medigas Locations:

### **Medigas Sudbury**

1560 Lasalle Blvd, Unit A  
Sudbury, ON P3A 1Z7

### **Medigas North Bay**

100 Golf Club Rd, Unit B  
North Bay, ON P1B 8X7

### **Medigas Sault Ste Marie**

51 Great Northern Rd, Unit 1  
Sault Ste. Marie, On P6B 4Y7

### **Medigas Timmins**

100 Waterloo Rd, Unit 7  
Timmins, ON P4N 4X5

### **Medigas Thunder Bay**

290 Water St  
Thunder Bay, ON P7B 2W1

### **Medigas Dryden**

66 Keith Ave, Unit 3  
Dryden, ON P8N 3K8

## Important Notes:

---

### **Same Day Delivery:**

For equipment to be delivered same day: the requisition must be received by Ontario Health atHome no later than 14:30. as vendor must receive it before 15:00 to ensure same day delivery.

### **Service Delivery Window:**

Vendor will contact the Recipient to inform them of their delivery window. Vendor determines delivery window and has until 21:00 to complete the delivery of the medical equipment.

### **The following rental medical equipment will require a signed waiver:**

- Transfer Pole

### **The following rental medical equipment will require set up or installation and cannot be picked up at Medigas location:**

- Floor to ceiling poles
- Electric hospital beds
- All style bedrails
- Raised toilet seats, all sizes, and combinations
- Toilet safety frames
- Trapeze bar, or free standing
- Wheelchair seat belts and lap trays

## Pre-Screening Equipment Information

Purpose: In order to deliver the following equipment in a timely and safe manner, the following information is required with the equipment request.

Code	Product Description	Pre-Screening Data Collection
<b>PE8083</b>	Transfer Pole, Tension Mounted Floor to Ceiling, Superpole with Horizontal Bar,	<ul style="list-style-type: none"> <li>- Superpole goes from 93" to 99."</li> <li>- Superpole extension will go from 101" to 120".</li> <li>- Ask what type of ceiling there is. Stucco, drop, or tile ceilings are not appropriate surfaces.</li> <li>- Advise the client that these are tension mounted poles and client will be <b>required to sign a waiver</b> prior to installation as there may be some damage to the ceiling or floor.</li> <li>- <b>Place a piece of tape at the install location.</b></li> </ul>
<b>PE8114</b>	Bed Assist M-Rail Handrail	<ul style="list-style-type: none"> <li>- Ask what type of bed it is, platform, sleigh, hospital or rolling frame). Not suitable for platform bed.</li> <li>- Ask what size of mattress (double, queen, or king).</li> <li>- M-Rail will <b>not</b> fit on a King Size bed that does not have a twin box spring.</li> <li>- Indicate mattress size in order notes.</li> <li>- Ask client to remove all items from under bed prior to install.</li> </ul>
<b>All Codes</b>	Walkers (All Types)	<ul style="list-style-type: none"> <li>- Please provide handle heights in the order notes for all types of walkers</li> <li>- Forearm attachments only fit on Type 1 walkers.</li> </ul>
<b>All Codes</b>	Tub Transfer Bench	<ul style="list-style-type: none"> <li>- What type of tub do they have? How deep is it? Jacuzzi tubs are deeper and may require leg extensions.</li> <li>- What side are the taps located (Indicate in order notes).</li> <li>- Do they have shower doors across the tub entrance that may impede the installation?</li> </ul>
<b>PE8137</b>	Clamp-On Rail/Bar	<ul style="list-style-type: none"> <li>- Ask what type of tub do they have; some acrylic tubs will crack with the pressure of the clamp and may damage the tub?</li> <li>- Do they have shower doors across the tub entrance that may impede the installation?</li> <li>- <b>Place a piece of tape at the install location</b></li> </ul>

## Canes

---

### PE8000 QUAD CANE

Drive Medical – Part # 10316-4

Please specify handle height when ordering

Product weight capacity: 500lbs

- Regular handle, adjustable height
- Handle height adjusts from 30" to 39"



## Walkers & Attachments

---

### TYPE 1 WALKER FOLDING ADJUSTABLE - Standard, No Wheels

Product weight capacity: 350lbs

Please specify handle height when ordering

Overall width: 20"

- PE8015**
- Junior Adjustable handle height: 25" to 32"
    - Drive Medical – Part # 10201-4

- PE8016**
- Adult Adjustable handle height: 32" to 39"
    - Drive Medical – Part # 10200-4



### PE8018 SIDE / HEMI WALKER

Drive Medical – Part # 10240-1

Please specify handle height when ordering

Product weight capacity: 300lbs

- Adjustable handle height: 29.5" to 36.5"



### PE8010 5" FIXED WHEELS - Pair

Drive Medical – Part # 10109

Product weight capacity: 350lbs

- Fixed wheels attach to the **front** of walkers only
- Adds 2" to handle height
- Not suitable for Bariatric walker

Client weight not to exceed weight capacity of walker



**PE8011 5" WHEELS AUTOSTOP - Pair**

Drive Medical – Part # RTL10088

Product weight capacity: 300lbs

- Wheels attach to the **rear** of walker only
- Not suitable for Bariatric walker
- Client weight not to exceed weight capacity of walker


**PE8009 5" SWIVEL WHEELS for Walker - Pair**

Drive Medical – Part # 10115\*

Product weight capacity: 350lbs

- Wheels attach to the **front** of walker only
- Not suitable for Bariatric walker
- Client weight not to exceed weight capacity of walker


**PE8014 WALKER GLIDES - Pair**

Drive Medical – Part # 10118SV

- Glides attach to the rear of walker only
- Not suitable for Bariatric walker


**PE8012 WALKER ATTACHMENT PLATFORM FOREARM**

Drive Medical – Part # 10105-1

Please specify attachment height when ordering

Product weight capacity: 300lbs

- Forearm Attachments for Aluminum Folding Walker
- Specify side required: left, right or both
- Adjustable handgrip 12" above walker height



## Rollator Walkers

---

### TYPE 2 ADJUSTABLE ROLLATOR

Drive Medical – Part # RTL10261BL

Please specify handle height when ordering

Product weight capacity: 300lbs

Measurements:

- Overall width: 25"
- Seat dimensions: 13" (W) x 12" (D)

#### PE8001 ROLLATOR TYPE 2 ADJUSTABLE – Junior/Super low

- Fixed seat height: 18"
- Adjustable handle height: 29.5" to 36"

#### PE8002 ROLLATOR TYPE 2 ADJUSTABLE –Standard

- Fixed seat height: 21"
- Adjustable handle height: 33" to 38"



#### PE8003 TYPE 2 ADJUSTABLE ROLLATOR - Tall

Drive Medical – Part # 700-917

Please specify handle height when ordering

Product weight capacity: 300lbs

Measurements:

- Overall width: 25"
- Seat dimensions: 17.5" (W) x 10" (D)
- Fixed seat height: 23"
- Adjustable handle height: 33.5" to 39.5"



#### PE8004 TYPE 3 ADJUSTABLE ROLLATOR - Super Low

Drive Medical – Part # 700-927

Please specify handle height when ordering

Product weight capacity: 300lbs

Measurements:

- Overall width: 25"
- Seat dimensions: 17.5" (W) x 10" (D)
- Fixed seat height: 18"
- Adjustable handle height: 29.5" to 35"





**PE8005 ROLLATOR TYPE 3 WALKER- Standard**

Drive Medical – Part # 700-920

Please specify handle height when ordering

Product weight capacity: 300lbs

Measurements:

- Overall width: 25"
- Seat dimensions: 17.5" (W) x 10" (D)
- Fixed seat height: 20"
- Adjustable handle height: 30.5" to 37"


**PE8006 TYPE 3 ADJUSTABLE ROLLATOR - Tall**

Drive Medical – Part # RTL10266-T

Please specify handle height when ordering

Product weight capacity: 300lbs

Measurements:

- Overall width: 23"
- Seat dimensions 18" (W) x 8.5" (D)
- Fixed seat height: 23.5"
- Adjustable handle height: 36" to 41"


**PE8019 HIGH PADDED PLATFORM WALKER**

Power Plus Mobility – Part # WALKABT

Please specify handle height when ordering

Product weight capacity: 250lbs

Measurements:

- Adjustable handle height: 40" to 46"
- Overall width: 26"



**PE8020 TYPE 3 ROLLATOR WITH FOREARM ATTACHMENT**

Drive Medical – Part # UPWKRBL10

Please specify handle height when ordering

Product weight capacity: 300lbs

Measurements:

- Overall width: 26"
- Seat dimensions: 18" (W) x 10" (D)
- Fixed seat height: 21"
- Adjustable handle height: 39" to 44"
- Handle Extension Range: 4" to 6"



---

**PE8008 OXYGEN TANK CARRIER FOR TYPE 3 ROLLATOR**

Drive Medical – Part # 18102

- Opening for threading cannula on the side of the bag
- Compatibility: D Tanks while using any Drive or CHAD® conservers and regulators



---

**PE8013 ROLLATOR SLOW DOWN BRAKES**

Drive Medical – Part # 730-942

- **Only** available for Type 3 Rollator PE8004 and PE8005
- Can apply pressure to both sides, or one side to correct gait



## Wheelchairs

---

### **STANDARD LIGHTWEIGHT BASIC Height Folding Wheelchair - With Swing-Away Footrests, Anti-Tippers, Flip-Back Removable Arm Rests and Seat Belt**

Product weight capacity: 300lbs

Brake Extensions ordered separately if required (PE8052)

- |               |  |
|---------------|--|
| <b>PE8023</b> | <ul style="list-style-type: none"> <li>• 16" seat width 16" seat depth               <ul style="list-style-type: none"> <li>○ Drive Medical – Part # CX416AFASFAT</li> </ul> </li> </ul> |
| <b>PE8024</b> | <ul style="list-style-type: none"> <li>• 18" seat width 16" seat depth               <ul style="list-style-type: none"> <li>○ Drive Medical – Part # CX418AFASFAT</li> </ul> </li> </ul> |
| <b>PE8025</b> | <ul style="list-style-type: none"> <li>• 18" seat width 18" seat depth               <ul style="list-style-type: none"> <li>○ Drive Medical – Part # CX420AFASFAT</li> </ul> </li> </ul> |
| <b>PE8026</b> | <ul style="list-style-type: none"> <li>• 20" seat width 16" seat depth               <ul style="list-style-type: none"> <li>○ Drive Medical – Part #CX420AFASFAT</li> </ul> </li> </ul>  |



Measurements:

- Seat to Floor Height: 19"

---

### **HEMI-HEIGHT LIGHTWEIGHT BASIC Folding Wheelchair - With Swing-Away Footrests, Anti-Tippers, Flip-Back Removable Arm Rests and Seat Belt**

Product weight capacity: 300lbs

Brake Extensions ordered separately if required (PE8052)

- |               |  |
|---------------|--|
| <b>PE8042</b> | <ul style="list-style-type: none"> <li>• 16" seat width 16" seat depth               <ul style="list-style-type: none"> <li>○ Drive Medical – Part # CX416AFASFAT</li> </ul> </li> </ul> |
| <b>PE8043</b> | <ul style="list-style-type: none"> <li>• 18" seat width 18" seat depth               <ul style="list-style-type: none"> <li>○ Drive Medical – Part #CX18ADDA-ELR</li> </ul> </li> </ul>  |
| <b>PE8044</b> | <ul style="list-style-type: none"> <li>• 20" seat width 16" seat depth               <ul style="list-style-type: none"> <li>○ Drive Medical – Part # CX420AFASFAT</li> </ul> </li> </ul> |



Measurements:

- Seat to Floor Height: 17"

### **LIGHTWEIGHT Folding Wheelchair - With Swing-Away Footrests, Anti-Tippers, Flip-Back Removable Arm Rests**

Product weight capacity: 150lbs

- PE8036**
  - 12" seat width x 12" seat depth
    - Drive Medical – Part # WB1200-2GFR
- PE8037**
  - 14" seat width x 14" seat depth
    - Drive Medical – Part # WB1400-2GJB



Measurements:

- Seat to Floor Height: 19"

### **HEMI-HEIGHT LIGHTWEIGHT BASIC Folding Wheelchair - With Swing-Away Footrests, Anti-Tippers, Flip-Back Removable Arm Rests and Seat Belt**

Product weight capacity: 250lbs

- PE8040**
  - 12" seat width x 12" seat depth
    - Drive Medical – Part # WB1200-2GFR
    - L412DDA-SF
- PE8041**
  - 14" seat width x 14" seat depth
    - Drive Medical – Part # WB1400-2GJB,
    - L414DDA-SF



Measurements:

- Seat to Floor Height: 13.5to 15.5"

### **PE8035 TRANSPORT BASIC WHEELCHAIR**

Drive Medical – Part # TR39E-SV

Product weight capacity: 250lbs

Measurements:

- Seat to Floor Height: 19"
- Seat dimensions: 19" (W) x 16" (D)
- Back height: 18"
- Width between arms: 17.5"
- 8" caster wheels



**TILT WHEELCHAIR – Includes Headrest, Cushion, Swing-Away Footrests, Seat Belt and Calf Pads – Specify if cushion is to be removed and replaced - identify new cushion in order.**

Product weight capacity: 250lbs

- PE8031**
  - 16" seat width
    - Power Plus Mobility – Part # SUPERTPL1616
- PE8032**
  - 18" seat width
    - Power Plus Mobility – Part # SUPERTPL1818
- PE8033**
  - 20" seat width
    - Power Plus Mobility – Part # SUPERTPL2018



Elevating footrests available with Special Authorization approval only

**RECLINING STANDARD LIGHTWEIGHT FOLDING WHEELCHAIR- With Swing Away Elevating footrests, Anti-Tippers, Flip-Back Removable Arm Rests and Seat Belt**

Product weight capacity: 250lbs

- PE8038**
  - 12" seat width 12" seat depth
    - Drive Medical – Part # PL412RBDDA
- PE8039**
  - 14" seat width 14" seat depth
    - Drive Medical – Part # PL414RBDDA



Measurements:

- Seat to Floor Height: 15" to 16"
- Backrest reclines from 90° to 180°

**PEDIATRIC TILT WHEELCHAIR**

Product weight capacity: 200lbs

- PE8029**
  - 12" seat width
    - Drive Medical – Part # KGP-8012-2GR
- PE8030**
  - 14" seat width
    - Drive Medical - Part # KGP-8014-2G

Measurements:

- Back Angle Range: 90° to 100°
- Tilt Angle Range: 0° to 45°
- Footrest Adjustment Range: 11.5" to 17"



## Ramps

---

### RAMP FOLDING

Product weight capacity: 600lbs

Suitable for wheelchairs and scooters

- |               |   |
|---------------|---|
| <b>PE8080</b> | <ul style="list-style-type: none"><li>• 6 feet long x 28.5" wide<ul style="list-style-type: none"><li>○ Drive Medical – Part # STDS1097</li></ul></li></ul>       |
| <b>PE8081</b> | <ul style="list-style-type: none"><li>• 8 feet long x 29.5" wide<ul style="list-style-type: none"><li>○ Sun Rise Medical – Part # EZTRIFAS8</li></ul></li></ul>   |
| <b>PE8082</b> | <ul style="list-style-type: none"><li>• 10 feet long x 29.5" wide<ul style="list-style-type: none"><li>○ Sun Rise Medical – Part # EZTRIFAS10</li></ul></li></ul> |



## Wheelchairs Accessories

---

### ELEVATING LEG RESTS- for Folding Wheelchairs

Not suitable for Transport or Recliner Chairs

- PE8046**
  - For use with 12" and 14" wheelchairs
    - Drive Medical – Part # WBELR
- PE8047**
  - For use with 16", 18", 20" wheelchairs
    - Drive Medical – Part # LK3JELR



---

### **PE8048** ADJUSTABLE TENSION WHEELCHAIR BACK

Drive Medical – Part # 14300\*

Product weight capacity: 350lbs

Measurements:

- 16" to 21" adjustable
- 1" thick high density foam pad



---

### AMPUTEE BOARD- Standard

Please specify if one or two foam stump cushion is required

- PE8049**
  - 16" Standard Size
    - Night Hawk – Part # 1180-1616
- PE8050**
  - 18" Standard Size
    - Night Hawk – Part # 1180-1818



---

### **PE8051** OXYGEN TANK HOLDER FOR WHEELCHAIR

Drive Medical – Part # STDS6008-1

Measurements:

- Bag: 28" (L) x 7.7" (W)
- Adjusted for use with "D" and "E" cylinders
- Top and bottom clasps easily attach for a secure fit to your folding wheelchair



**PE8052 WHEEL BRAKE LOCK EXTENSION HANDLE - Pair**

Drive Medical – Part # STDS601

- For use with Medigas wheelchair codes 8023, 8024, 8025, 8026, 8027, 8028, 8036, 8037, 8040, 8041, 8042, 8043, 8044, 8045
- Not suitable for client owned wheelchairs



**PE8055 TRAY REMOVABLE- ADJUSTABLE**

Please specify size required

Width Adjustable mounting brackets

- **16"** - Adjustable to 15" or 14"
  - Power Plus Mobility – Part # TRBK16-P
- **18"** - Adjustable to 17" or 16"
  - Power Plus Mobility – Part # TRBK18-P
- **20"** - Adjustable to 19" or 18"
  - Power Plus Mobility – Part #
  - TRBK20-P



NOT compatible with Tilt Wheelchairs or Reclining Wheelchairs

**PE8170 PEDIATRIC - TRAY REMOVABLE**

Power Plus Mobility – Part # TRBK-12 & TRBK-14

Please specify size required

- 12"
- 14"



**PE8171 TRAY REMOVABLE – HALF LEFT – PADDED**

Night Hawk – Part # 1135-L

**PE8172 TRAY REMOVABLE – HALF RIGHT -PADDED**

Night Hawk – Part # 1135-R





## Seating

---

### **CUSHION PRESSURE REDISTRIBUTION SURFACE CHAIR FOAM**

**- with water-resistant cover**

Product weight capacity: 250bs

- |               |   |
|---------------|---|
| <b>PE8056</b> | <ul style="list-style-type: none"> <li>• 12" (W) x 12" (D)               <ul style="list-style-type: none"> <li>○ VitaCare – Part # VIT191412X12X3</li> </ul> </li> </ul> |
| <b>PE8057</b> | <ul style="list-style-type: none"> <li>• 14" (W) x 14" (D)               <ul style="list-style-type: none"> <li>○ Drive Medical – Part # M8061-PB</li> </ul> </li> </ul>  |
| <b>PE8058</b> | <ul style="list-style-type: none"> <li>• 16" (W) x 16" (D)               <ul style="list-style-type: none"> <li>○ Drive Medical – Part # M8063</li> </ul> </li> </ul>     |
| <b>PE8059</b> | <ul style="list-style-type: none"> <li>• 18" (W) x 16" (D)               <ul style="list-style-type: none"> <li>○ Drive Medical – Part # M8064</li> </ul> </li> </ul>     |
| <b>PE8060</b> | <ul style="list-style-type: none"> <li>• 18" (W) x 18" (D)               <ul style="list-style-type: none"> <li>○ Drive Medical – Part # 14908*</li> </ul> </li> </ul>    |
| <b>PE8061</b> | <ul style="list-style-type: none"> <li>• 20" (W) x 16" (D)               <ul style="list-style-type: none"> <li>○ Drive Medical – Part # M8065</li> </ul> </li> </ul>     |
| <b>PE8062</b> | <ul style="list-style-type: none"> <li>• 22" (W) x 18" (D)               <ul style="list-style-type: none"> <li>○ Drive Medical – Part # M8077</li> </ul> </li> </ul>     |
| <b>PE8063</b> | <ul style="list-style-type: none"> <li>• 24" (W) x 20" (D)               <ul style="list-style-type: none"> <li>○ VitaCare – Part # 191424202995*</li> </ul> </li> </ul>  |

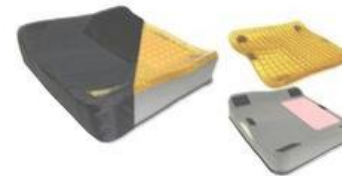


### **CUSHION PRESSURE REDISTRIBUTION SURFACE CHAIR GEL -**

**No cover available**

Product weight capacity: 600lbs

- |               |   |
|---------------|---|
| <b>PE8064</b> | <ul style="list-style-type: none"> <li>• 12" (W) x 12" (D)               <ul style="list-style-type: none"> <li>○ Action Products – Part # X1212</li> </ul> </li> </ul> |
| <b>PE8065</b> | <ul style="list-style-type: none"> <li>• 14" (W) x 14" (D)               <ul style="list-style-type: none"> <li>○ Action Products – Part # X1414</li> </ul> </li> </ul> |
| <b>PE8066</b> | <ul style="list-style-type: none"> <li>• 16" (W) x 16" (D)               <ul style="list-style-type: none"> <li>○ Action Products – Part # X1616</li> </ul> </li> </ul> |
| <b>PE8067</b> | <ul style="list-style-type: none"> <li>• 18" (W) x 16" (D)               <ul style="list-style-type: none"> <li>○ Action Products – Part # X1816</li> </ul> </li> </ul> |
| <b>PE8068</b> | <ul style="list-style-type: none"> <li>• 18" (W) x 18" (D)               <ul style="list-style-type: none"> <li>○ Action Products – Part # X1818</li> </ul> </li> </ul> |



## CUSHION PRESSURE REDISTRIBUTION SURFACE CHAIR GEL

**No cover available**

Product weight capacity: 600lbs

- |               |  |
|---------------|--|
| <b>PE8069</b> | <ul style="list-style-type: none"> <li>• 20" (W) x 16" (D)               <ul style="list-style-type: none"> <li>○ Drive Medical – Part # 8046-5</li> </ul> </li> </ul> |
| <b>PE8070</b> | <ul style="list-style-type: none"> <li>• 22" (W) x 18" (D)               <ul style="list-style-type: none"> <li>○ Drive Medical – Part # 8046-5</li> </ul> </li> </ul> |
| <b>PE8071</b> | <ul style="list-style-type: none"> <li>• 24" (W) x 20" (D)               <ul style="list-style-type: none"> <li>○ Drive Medical – Part # 8046-7</li> </ul> </li> </ul> |




---

## AIR CUSHION HIGH PROFILE 4" - includes cover

Product weight capacity: 500lbs

- |               |  |
|---------------|--|
| <b>PE8072</b> | <ul style="list-style-type: none"> <li>• 12" (W) x 12" (D) x 4" (H)               <ul style="list-style-type: none"> <li>○ Permobil – Part # 1R66C</li> </ul> </li> </ul>          |
| <b>PE8073</b> | <ul style="list-style-type: none"> <li>• 14" (W) x 14" (D) x 4" (H)               <ul style="list-style-type: none"> <li>○ Permobil – Part # 1R88C</li> </ul> </li> </ul>          |
| <b>PE8074</b> | <ul style="list-style-type: none"> <li>• 16" (W) x 16" (D) x 4" (H)               <ul style="list-style-type: none"> <li>○ Drive Medical – Part # 8047-16</li> </ul> </li> </ul>   |
| <b>PE8075</b> | <ul style="list-style-type: none"> <li>• 18" (W) x 16" (D) x 4" (H)               <ul style="list-style-type: none"> <li>○ Drive Medical – Part # 8047-18</li> </ul> </li> </ul>   |
| <b>PE8076</b> | <ul style="list-style-type: none"> <li>• 18" (W) x 18" (D) x 4" (H)               <ul style="list-style-type: none"> <li>○ Drive Medical – Part # 8047-1818</li> </ul> </li> </ul> |
| <b>PE8077</b> | <ul style="list-style-type: none"> <li>• 20" (W) x 16" (D) x 4" (H)               <ul style="list-style-type: none"> <li>○ Drive Medical – Part # 8047-20</li> </ul> </li> </ul>   |
| <b>PE8078</b> | <ul style="list-style-type: none"> <li>• 22" (W) x 18" (D) x 4" (H)               <ul style="list-style-type: none"> <li>○ Drive Medical – Part # 8047-2218</li> </ul> </li> </ul> |
| <b>PE8079</b> | <ul style="list-style-type: none"> <li>• 24" (W) x 20" (D) x 4" (H)               <ul style="list-style-type: none"> <li>○ Permobil – Part # 1R1311C</li> </ul> </li> </ul>        |



## Transfer Aids

---

**PE8108 TRAPEZE BAR - Clamp On**  
Drive Medical – Part # 13009TRAPBV  
Product weight capacity: 250lbs

- Mounts easily to metal frame headboards and fits most manufacturers



**PE8109 TRAPEZE BAR - Freestanding**  
Drive Medical – Part # 13049SV  
Product weight capacity: 650lbs

- Boom length: 37"



**PE8083 TRANSFER POLE - Tension Mounted Floor to Ceiling Pole with Horizontal Bar**

Health Craft – Part # PSPB-S & STP-AK

Location on where to install pole must be clearly identified (i.e., tape on floor)

Product weight capacity: 300lbs

- Floor to ceiling height 93" to 99"
- This item may leave indentation or damage to the floor and ceiling.



**PE8084 SUPERPOLE U FIT EXTENDER**

Health Craft – Part # SP-UF

- For ceiling height 101" to 120"

**PE8085 TRANSFER BOARD**  
Bowers Medical – Part # 0811672261  
Product weight capacity: 400lbs

- Semiflexible plastic transfer board with handles
- 10" (W) x 26" (L) x 0.25" (T)



**PE8086    TRANSFER DISC 15"**

Parsons ADL – Part # 14A061-1  
Product weight capacity: 330lbs

- Low profile with a non-slip surface top and bottom for safety.



**PE8111    STANDING AND TURNING DEVICE**

Parsons ADL – Part # 14A600A  
Product weight capacity: 300lbs

Measurements:

- Adjustable handle from 36" to 48"
- Disk dimension 16"
- Rotates 360 degrees



**PE8112    SIT TO STAND MANUAL TRANSFER LIFT**

Arjo Huntleigh – Part # NTB2000  
Product weight capacity: 400lbs

Measurements:

- Base clearance: 4.5"
- Overall width: 34" (open) 19" (closed)
- Turning radius: 40.9"
- For patients 4'11" to 6'6" tall



**PE8173    TRANSFER BELT - Small**

Sunnyfield – Part # 2000S

- Adjustable length 22" to 34"

**PE8087    TRANSFER BELT - Medium**

Drive Medical – Part # 6292\*

- Adjustable length 30" to 40"



**PE8088    TRANSFER BELT - Large**

Sunnyfield - Part #2000L

- Adjustable length 32" to 52"

## Patient Lift and Slings

---

### **PE8107 ELECTRIC LIFT SIT TO STAND WITH MEDIUM SLING**

Drive Medical – Part # 13246 & 13263E

Product weight capacity: 400lbs

Measurements:

- Base Clearance: 4.5"
- Overall width: 40" (open) 24.5" (closed)
- Boom height: 26" to 81"



---

### **PE8089 LIFT ELECTRIC**

Drive Medical – Part # 13240\*

Product weight capacity: 450lbs

Measurements:

- Base clearance: 2 "
- Overall width: 41.5" (open) 25" (closed)
- Boom height: 27.5" to 76"
- Casters 5" rear
- Requires 4.5" clearance under bed
- Slings ordered separately



---

### **PE8110 DIGITAL PATIENT LIFT SCALE**

Drive Medical – Part # 13046-HD

Product weight capacity: 600lbs

- Only to be used with PE8089
- Determines the weight of a person suspended from a portable patient lift mechanism



### SLING FULL BODY WITH COMMODE

Aperture for toileting without removing sling

	Size	Manufacturer Part #	Measurements
<b>PE8177</b>	Pediatric	Joerns – Part # 70058	Weight capacity: 75 -150lbs Dimensions: 24" (L) x 33" (W)
<b>PE8091</b>	Small	Joerns – Part # 70058*	Weight capacity: 75-150lbs Dimensions: 33" (L) x 24" (W)
<b>PE8092</b>	Medium	Drive Medical – Part # 13221M	Weight capacity: 600lbs Dimensions: 53" (L) x 42" (W)
<b>PE8093</b>	Large	Drive Medical – Part # 13221L	Weight capacity: 600lbs Dimensions: 58" (L) x 45" (W)
<b>PE8094</b>	Extra Large	Drive Medical – Part # 13221XL	Weight capacity: 600lbs Dimensions: 60" (L) x 44" (W)



### SLING DIVIDED LEG WITH HEADREST

	Size	Manufacturer Part #	Measurements
<b>PE8178</b>	Pediatric	Joerns – Part # NA1067	Weight capacity: 35-100lbs Dimensions: 40" (L) x 20" (W)
<b>PE8095</b>	Small	Joerns – Part # 70013*	Weight capacity: 75-150lbs Dimensions 46" (L) x 29" (W)
<b>PE8096</b>	Medium	Joerns – Part # 70012*	Weight capacity: 125-200lbs Dimensions 52" (L) x 33" (W)
<b>PE8097</b>	Large	Joerns – Part # 70011*	Weight capacity: 175-350lbs Dimensions 59" (L) x 38" (W)
<b>PE8098</b>	Extra Large	Joerns – Part #70010*	Weight capacity: 275-500lbs Dimensions 61" (L) x 45" (W)



### SLING DIVIDED LEG WITHOUT HEADREST

	Size	Manufacturer Part #	Measurements
<b>PE8179</b>	Pediatric	Joerns – Part # NA1002P	Weight capacity: 35-100lbs Dimensions: 25" (L) x 23" (W)
<b>PE8099</b>	Small	Joerns – Part # 70003*	Weight capacity: 75-150lbs Dimensions: 61" (L) x 45.5" (W)
<b>PE8100</b>	Medium	Drive Medical – Part # 13262M	Weight capacity: 450lbs Dimensions: 62" (L) x 39" (W)
<b>PE8101</b>	Large	Drive Medical – Part # 13262L	Weight capacity: 450lbs Dimensions: 63" (L) x 44" (W)
<b>PE8102</b>	Extra Large	Joerns – Part # 70000*	Weight capacity: 275-500lbs Dimensions: 61" (L) x 45.5" (W)



### SLING HYGIENE

U sling-4- or 6-point cradle with head support straps

	Size	Manufacturer Part #	Measurements
<b>PE8180</b>	Pediatric	Joerns – Part # NA1600	Weight capacity: 35-100lbs Dimensions: 29" (L) x 27.5" (W)
<b>PE8103</b>	Small	Drive Medical – Part # 13220S	Weight capacity: 450lbs Dimensions: 44" (L) x 35" (W)
<b>PE8104</b>	Medium	Drive Medical – Part # 13220M	Weight capacity: 450lbs Dimensions: 49" (L) x 37" (W)
<b>PE8105</b>	Large	Drive Medical – Part # 13220L	Weight capacity: 450lbs Dimensions: 54" (L) x 46" (W)
<b>PE8106</b>	Extra Large	Drive Medical – Part # 13220XL	Weight capacity: 450lbs Dimensions: 58" (L) x 49" (W)



## Bedroom Aids

---

**PE8118 36" ELECTRIC HOSPITAL BED PACKAGE**

Drive Medical – Part # 15005LP-HRPKG-TS

Patient weight capacity: 350lbs Total weight capacity: 450lbs

- Mattress ordered separately
- Dimensions : 36"(W) x 88"(L)



**HOSPITAL BED STANDARD EXTENDER**

**PE8119** Drive Medical – Part # 15005EXTKITL & 3835-4

- **Only** for use with Medigas 36" Electric Hospital Bed PE8118
- Adds 4" to length of bed
- Comes with foam insert and vinyl cover




---

**PE8175 PARTIAL HOSPITAL BED RAIL**

Drive Medical – Part # 15201BV




---

**HALO SIDE BED WING- Not suitable for patient owned beds**

Adjustable up to 42"

A solid steel locking mechanism allows 360° rotation to assist users with a variety of grips and offer support during transfers

- PE8115**
- Single-sided Halo Safety Wing for hospital beds

- Permobil – Part # 77701

- PE8116**
- Double-sided Halo Safety Wing for hospital beds

- Permobil – Part # 77702





**PE8120 BED ASSIST RAIL 3 POSITION FOR ELECTRIC HOSPITAL BED**

Invacare – Part # 6632

Adjusts to 3 positions  
Quick release button

Measurements:

- Rail length: 27"
- Width between rails: 36"
- Rail height above deck raised: 14.5"



**PE8113 RAISED BLOCKS WITH UNIVERSAL HOLES**

Drive Medical – Part # 6299

Product weight capacity: 500lbs per block

- Adjustable with inserts to raise up the risers from 3" to 6"
- Risers have a 4" wide cut out for furniture legs



**PE8114 BED ASSIST - MRAIL**

Drive Medical – Part # 1222P

Product weight capacity: 300lbs

- 18" Height
- Fits a twin, double or queen size box spring.
- Cannot be platform support based. Strapping must be able to run across the base/bed frame and underneath, back to the M-Rail
- May be used with **some** types of care, institutional and hospital beds
- The mattress must be tight against the assistive handrail, with no gaps at all times. This should be checked frequently- at least daily



**PE8117 PIVOTING BED ASSIST RAIL - CLAMP ON**

Health Craft – Part # SR-S

Product weight capacity: 300lbs

- The Smart-Rail is installed between the mattress and box spring and is secured in place with a safety strap. In the closed position, the Smart-Rail is height adjustable to accommodate the thickness of the mattress. In the opened position, the Smart-Rail is height adjustable to accommodate the height of the user

**PE8122 BED CRADLE**

Parsons ADL – Part # 16H193A-2

Bed blanket support eliminates the weight of blankets on feet and ankles. Tucks easily under the mattress.

Measurements:

- 15"(H) x 19" (W) x 10" (D)



## Therapeutic Surfaces

---

### PE8123 NON-POWERED AIR OVERLAY SECTIONS - 3 Section Overlay

**Must be ordered with PE8124**

Permobil – Part # 3400\* & UL3680

Will be inflated to medium fullness by equipment provider.  
**Trained provider (e.g., OT, PT) follow-up is required to ensure correct inflation.**

Includes:

- 3" foam underlay
- Three overlay sections, each 34" (W) x 20" (L)
- Hand pump to adjust inflation level



### PE8124 LEVELING PAD - FOAM INSERT-

**Must be ordered with PE 8123 -Please specify placement of leveling pad.**

Permobil – Part # RLP2134-10

- Foam head pad – 34" (W) x 20" (L)

---

### PE8125 OVERLAY, FOAM/GEL

Drive Medical – Part # 14893\*

Product weight capacity: 300lbs

Measurements:

- 34" (W) x 76" (L) x 3.5" (H)




---

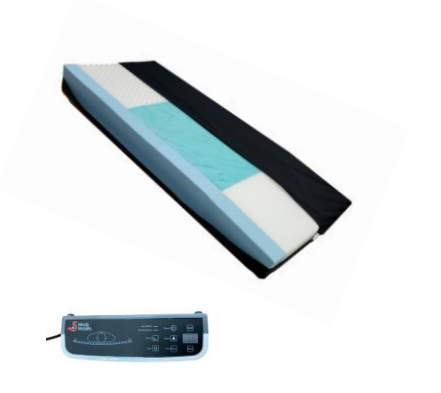
### PE8126 ACTIVE MULTI-ZONE MATTRESS WITH ALTERNATING PRESSURE – POWERED

Permobil – Part #ATL3580 & ATLHYPUMP

Product weight capacity: 500lbs

Measurements:

- 35" (W) x 80" (L) x 7" (H)
- 4" wide firm borders for safe transfers



**PE8128 STANDARD HIGH DENSITY FOAM MATTRESS**

Drive Medical – Part # 15970\*

Product weight capacity: 450lbs

Measurements:

- 36"(W) x 80"(L) x 6"(H)



---

**PE8130 FALL MATS**

Drive Medical – Part # PM20GA

Measurements:

- 24"(W) x 70"(L) x 0.75"(H)



## Bathroom Aids

---

### PE8131 BATH BOARD – Plastic

Drive Medical – Part # 770-420

Product weight capacity: 330lbs

Measurements:

- 14.5" (W) x 30.5" (L)
- Fits bathtub inner widths between 16" and 26 ¾"



### PE8132 BATH SEAT ADJUSTABLE WITH REMOVABLE BACK

Drive Medical – Part # 12202KD-4

Product weight capacity: 300lbs

Measurements:

- Seat dimensions: 19.25" (W) x 11.5" (D)
- Adjustable height 16" to 21"
- Outside Legs: 19.5" (W) x 19.5" (D)



### PE8134 BATH STOOL

Drive Medical – Part # RTL12004KD

Product weight capacity: 300lbs

Measurements:

- Seat dimensions 13" (W) x 13" (D)
- Adjustable height 13.5" to 21"



### PE8181 PEDIATRIC BATH CHAIR WITH ADJUSTABLE BACKREST – SMALL

Drive Medical – Part # OT1000

Product weight capacity: 60lbs

Measurements:

- User Height: up to 36"
- Back Height: 18"
- Adjustable slip-resistant legs raise chair up to 7"



**PE8135 TUB TRANSFER BENCH REGULAR- Unpadded**

Drive Medical – Part # 12011KD-1

**Specify Taps on Left or Right**

Product weight capacity: 400lbs

Measurements:

- Seat dimensions: 26" (W) x 18.5" (H) x 19.5" (D)
- Adjustable height: 17.5" to 22.5"
- Outside legs approximately 32" (W) x 23" (D)



---

**PE8137 CLAMP-ON TUB RAIL/BAR**

Drive Medical – Part #RTL12036-ADJ

**Clearly identify where to install the tub bar (i.e., tape on tub)**

Product weight capacity: 300lbs

Measurements:

- Adjustable height 14.5" to 17"
- Adjustable width from 3" to 7"
- Not for use with fiberglass tubs



## Toileting Aids

---

### **PE8138 RAISED TOILET SEAT- WITH ARMS- Adjustable Regular**

Drive Medical – Part #RTL12C002-WH

**Specify seat height required**

Product weight capacity: 350lbs

- Accommodates three different seat heights (2", 4" and 6")
- Pivoting armrests can be raised out of the way
- Fits comfortably on most standard and elongated toilets



### **PE8139 RAISED TOILET SEAT- WITHOUT ARMS- Heavy Duty**

Compass Health – Part # B313-00

Product weight capacity: 500lbs

Measurements:

- Dimensions: 4.25 (H) x 16.5 (W) x 16.63 (D)
- The Safe Lock system ensures safe use and easy installation



### **PE8140 TOILET ARMS-FREE STANDING**

Drive Medical – Part # RTL12079

Product weight capacity: 300lbs

Measurements:

- Overall width: 26.5"
- Width between arms: 21"
- Free standing around toilet
- Fits standard and elongated toilets



### **PE8141 TOILET ARMS-MOUNTED**

Drive Medical – Part # 12001-4

Product weight capacity: 300lbs

Measurements:

- Overall width: 21.5" to 24.5"
- Width between arms: 18" to 21"
- Adjustable height
- Must be able to remove existing toilet seat bolts to install



**PE8142 TOILET SEAT 3.5" ELEVATOR – Regular**

Drive Medical – Part # RTL12607

Product weight capacity: 250lbs

- Must be able to safely remove existing toilet seat bolts to install

Measurements:

- 13.5" (W) x 17.5" (D) x 3.5" (H)



---

**PE8143 TOILET SEAT 3.5" ELEVATOR – Elongated**

Drive Medical – Part # RTL12608

Product weight capacity: 250lbs

- Must be able to safely remove existing toilet seat bolts to install

Measurements:

- 14" (W) x 19.25" (D) x 3.5" (H)



---

**PE8144 COMMODE – OVER THE TOILET-STATIONARY UNPADDED [FIXED ARMS]**

Drive Medical – Part # 11105N-4

Product weight capacity: 350lbs

- Comes with commode bucket and splash shield

Measurements:

- Adjustable height: 16" to 21.5"
- Width between arms: 18"
- Width outside arms: 22"
- Dimensions: 14" (W) x 16.5" (D)





**PE8146 COMMODE - STATIONARY DROP ARMS**

Drive Medical – Part # 11125KD-1

Will not fit over toilet

Product weight capacity: 300lbs

- Comes with commode bucket and splash shield

Measurements:

- Adjustable height: 20" to 24"
- Width between arms: 19.75"
- Seat dimensions: 13.75" (W) x 16.5" (D)



**PE8145 PEDIATRIC COMMODE - FIXED ARMS**

Drive Medical – Part # PC1000BL

Product weight capacity: 250lbs

- Comes with commode bucket and splash shield

Measurements:

- Adjustable height: 10.5" to 14.5"
- Width between arms: 13"
- Dimensions: 14" (W) x 16.5" (D)



**PE8148 COMMODE - WHEELED-With Flip up armrests**

AMG Medical Inc. – Product # 770-375

Product weight capacity: 275lbs

- Comes with commode bucket and splash shield
- Removable, swing away footrests with heel strap

Measurements:

- Fixed Seat height: 22", Width between arms: 18"
- Total width approximately: 23"



---

**PE8182 PEDIATRIC WHEELED COMMODE WITH SECUREMENT STRAP**

Performance Health – Part # 081172568

Product weight capacity: 300lbs

- Comes with commode bucket

**Measurements:**

- Seat to Floor Height: 21"
- Width between arms: 15"
- Seat to Arm Height: 7"
- Seat dimensions: 14" (W) x 14 ½ "(D)



## Treatment Modality

### PE8150 TENS MACHINE

AMG Medical Inc. – Part # 715-430

AMG Medical Inc. – Part # 715-715

AMG Medical Inc. – Part # 715-530

- Comes with one set of supplies (electrodes and lead wires)
  - 2"x 2" electrodes (qty 4)
  - Lead wires (qty 2)



### PE8151 MEDICATION NEBULIZER COMPRESSOR (Supplies ordered separately)

Drive Medical – Part # 3655LT

- A/C powered for providing aerosol medication treatments.
- Electrical requirements 1.2 amps, 120 V~ 60 Hz

Supplies ordered as each

Item Code	Manufacturer Part #	Item Description
<b>PE8152</b>	Hudson -Part # 1705	Nebulizer Kit – Adult
<b>PE8153</b>	Hudson-Part #1705	Nebulizer Kit – Pediatric



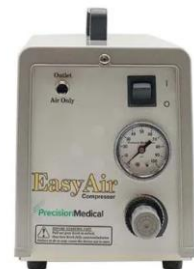
**PE8154 COMPRESSOR HUMIDITY (Supplies ordered separately)**

KEGO Medical - Part # PM-15P

- A/C powered for use in providing continuous humidity for trach clients.

Supplies ordered as each.

Item Code	Manufacturer Part #	Item Description
<b>PE8155</b>	Hudson – Part # 1075	Humidity Compressor Kit – Adult trach mask
<b>PE8156</b>	Hudson – Part # 1076	Humidity Compressor Kit – Pediatric trach mask
<b>PE8163</b>	Cardinal Health Canada Part # BCD002002	Airlife Nebulizer Bottle 350ml
<b>PS4177</b>	Vyaire Medical Part # 001400	6ft Aerosol Corrugated Tubing
<b>PS4393</b>	Mckesson – Part #158780	Distilled Water 4L
<b>PS4390</b>	Hudson – Part # 1075	Tracheostomy Mask, with Snap – Adult
<b>PS4392</b>	Medline Part # HCS4621B	Tracheostomy Mask - Pediatric



## PE8157 SUCTION MACHINE - RESPIRATORY

Drive Medical –Part # 7325P-D

Operating Humidity Range: 15-93% non-condensing

Vacuum Range: 50-550mm Hg+/-5%

Airway suctioning removes oral and respiratory secretions.

- Includes (1) collection bottle, (1) hydrophobic bacteria filter, (1) 6ft tubing.
- Order Yankauer Suction Tips or Suction Catheters Separately (see below)

Supplies ordered as each.

Item Code	Manufacturer Part #	Description
PE8158	Sunset Healthcare Part # RES026S-E	Respiratory Suction Kit – Adult
PE8159	Sunset Healthcare Part # RES026S-E	Respiratory Suction Kit – Pediatric
PE8164	Drive Medical Part #22330	Suction Canister Assembly and 6ft Tube Kit
PS4192	Canadian Hospital Specialties Part # 50-1008	8FR Suction Catheter Straight 1cm Calibrated, Control Valve
PS4191	Canadian Hospital Specialties Part # 50-1010	10FR Suction Catheter Straight 1cm Calibrated, Control Valve
PS4189	Canadian Hospital Specialties Part # 52-2012	12FR Suction Catheter Coude Tip, Control Valve
PS4394	Canadian Hospital Specialties Part # 52-2014	14 FR Suction Catheter Coude Tip, Control Valve
PS4190	Canadian Hospital Specialties Part # 70-8072	6' Connecting tubing for suction catheters
PS4193	Drive Medical Part # 30-3064	Yankauer Suction Handle with Bulb Tip, No control vent



**PE8160 SUCTION MACHINE - GASTRIC ASPIRATOR**

Allied Health – Part # 01-22-0270

- A/C Powered
- Single-use collection bottle & connecting tubing included.
- Used for Gastric G-Tube suctioning.
- **Supplies are ordered from Ontario Health atHome Supply Vendor**

Supplies ordered as each.

Item Code	Manufacturer Part #	Description
<b>PE8161</b>	Part # 01902000,01903100,0 1903695	Gastric Supply Kit – Adult
<b>PE8167</b>	Allied Health – Part # 1903695	Collection Bottle 1200ml
<b>PE8168</b>	Medline – Part # 7305D-608	Bacteria Filter
<b>PE8169</b>	Cardinal Health Canada – Part # 70-6072	4.5” Connector Tube



## Bariatric Equipment

---

**PE8017 BARIATRIC TYPE 1 WALKER FOLDING ADJUSTABLE - Standard, No Wheels**

Drive Medical – Part # 10220-1

Please specify handle height when ordering

Product weight capacity: 600lbs

Measurements:

- Overall width: 23"
- Adjustable handle height: 32" to 39"




---

**PE8007 BARIATRIC TYPE 3 - EXTRA WIDE ADJUSTABLE ROLLATOR**

Performance Health – Part # 7500348\*

Please specify handle height when ordering

Product weight capacity: 700lbs

Measurements:

- Overall width: 24"
- Fixed seat height: 21"
- Adjustable handle height: 33" to 38"




---

**PE8147 BARIATRIC COMMUNE - STATIONARY DROP ARMS**

Drive Medical – Part # 11135-1

Product weight capacity: 500lbs

- Comes with pail
- If space allows, will fit over toilet

Measurements:

- Adjustable height 17.5" to 22"
- Width between arms: 25.75"
- Seat dimensions 23.25" (W) x 18.5" (D)



**PE8149 COMMODE WHEELED - Bariatric With Flip Up Armrests**

Drive Medical – Part # NRS185008

Product weight capacity: 500lbs

- Comes with commode bucket and splash shield

Measurements:

- Seat to floor height: 20.5" to 22.4"
- Seat dimensions 22" (W) x 17.1" (H)




---

**BATH SEAT ADJUSTABLE WITH REMOVABLE BACK- Heavy Duty**

**PE8133** Drive Medical – Part # 12021KD-1

Product weight capacity: 500lbs

Measurements:

- Seat dimensions: 20" (W) x 12" (D)
- Adjustable height: 14" to 19"
- Outside legs: 17.5" (W) x 17.25" (D)




---

**PE8136 BARIATRIC TUB TRANSFER BENCH - Unpadded**

Drive Medical – Part # 12025KD-1

**Specify Taps on Left or Right**

Product weight capacity: 500lbs

Measurements:

- Seat dimensions 26.5" (W) x 16.5" (D)
- Adjustable height 18" to 23.5"
- Outside legs approximately 32.5" (W) x 24" (D)




---

**HEAVY DUTY BASIC Folding Wheelchair - With Swing-Away Footrests, Anti-Tippers, Flip-Back Removable Arm Rests and Seat Belt**

Product weight capacity: 450lbs

**Specify seat to floor height required**

Seat to floor height 17.5" to 19.5"

- PE8027**
  - 22" seat width 18" seat depth
    - Drive Medical – Part # STD22ECDFASF
- PE8028**
  - 24" seat width 18" seat depth
    - Drive Medical – Part # STD24ECDFASF





**PE8045 HEAVY DUTY HEMI-HEIGHT BASIC Folding Wheelchair - With Swing-Away Footrests, Anti-Tippers, Flip-Back Removable Arm Rests and Seat Belt**

Drive Medical – Part # STD26ECDFA  
 Product weight capacity: 700lbs



Measurements:

- 26" seat width x 20" seat depth
- Seat to floor height: 19.5"
- Back height: 18"

**PE8034 BARIATRIC TILT WHEELCHAIR – Includes Headrest, Cushion, Swing-Away Footrests, Seat Belt and Calf Pads – Specify if cushion is to be removed and replaced – identify ROLLT in new order.**

Power Plus – Part # SUPERTPL2220  
 Product weight capacity: 600lbs



- Tilt angle 0° to 55°
- Back angle 0°, 5°, 10°, 15°

**PE8090 LIFT ELECTRIC-Bariatric**

Drive Medical – Part # 13244  
**Slings ordered separately**  
 Product weight capacity: 600lbs



Measurements:

- Overall width: 25" (closed), 45.75" (open)
- Base clearance: 2"
- Boom height: 32" to 75.5"
- Casters 3" front, 4" rear

**PE8121 42" BARIATRIC HOSPITAL BED PACKAGE**

Drive Medical – Part # 15300LW-HR  
 Total weight capacity: 600 lbs. Includes occupant, mattress, rails, accessories, personal affects, etc.



- Mattress ordered separately
- Dimensions: 42" (W) x 88" (L)

---

**PE8176 BARIATRIC PARTIAL HOSPITAL BED RAIL**

Drive Medical – Part # 15021BV



---

**PE8127 BARIATRIC ACTIVE MULTI-ZONE MATTRESS WITH ALTERNATING PRESSURE - POWERED**

Permobil – Part # ATL4280 & ATLYHPUMP

Product weight capacity: 700lbs

Measurements:

- 42" (W) x 80" (L) x 7" (H)
- 4" wide firm borders for safe transfers



---

**PE8129 BARIATRIC HIGH DENSITY FOAM MATTRESS**

Drive Medical – Part # 15301\*

Product weight capacity: 585lbs

Measurements:

- 42" (W) x 80" (L) x 6.5" (H)



## Delivery Categories

**\* Orders received after the cut off time will be completed on the next calendar day as per Delivery Category definition. \***

Delivery Category	Description
<b>Same Day Delivery</b>	For all cities with same day availability. Delivery to be completed no later than 21:00 on the same calendar day the order is received by vendor. Vendor must receive order by 15:00. <b>Delivery time determined by the vendor.</b>
<b>Next Day (Standard) Delivery</b>	Delivery to be completed no later than 21:00 on the next available day on which the order is received by vendor. Vendor must receive order by 17:00. <b>Delivery time determined by the vendor.</b>
<b>Non-Urgent Delivery</b>	Delivery to be completed no later than 21:00 on the later of the next available delivery day or the third calendar day after the day on which the order is received by vendor, if order is received by 17:00. <b>Delivery time determined by the vendor.</b>
<b>Non-Urgent Replacement Request</b>	Vendor to complete replacements for previously ordered equipment no later than 5 days after request is made. (which, for certainty, includes weekends and holidays). <b>All replacement requests will be deemed non urgent unless specified as urgent.</b>
<b>Urgent Replacement Request</b>	Vendor to deliver replacements for previously ordered equipment no later than <b>24 hours</b> after request is made. (which, for certainty, includes weekends and holidays) (Even if the delivery of the replacement occurs outside of Service Operating Hours)).
<b>Non-Urgent Recovery Request (Pick Up)</b>	Barring any actions with which may impede or delay recovery of equipment, vendor is to recover the medical equipment no later than 5 Business Days after receiving the request.
<b>Urgent Recovery Request (Pick Up)</b>	Barring any actions with which may impede or delay recovery of equipment, vendor is to recover the medical equipment no later than 2 Calendar Days after receiving the request.  <b>*Note, a fee is associated with Urgent Recovery Requests</b>

## Delivery Information/ Same Day Availability

2021 Census Division	Community	Same Day Delivery Available	Available Delivery Day(s)
48 - Nipissing	Bear Island 1 First Nation	NO	Boat Access only - Temagami (subject to availability)
48 - Nipissing	Bonfield	YES	Any
48 - Nipissing	Calvin	YES	Any
48 - Nipissing	Chisholm	YES	Any
48 - Nipissing	East Ferris	YES	Any
48 - Nipissing	Nipissing 10 First Nation	YES	Any
48 - Nipissing	Nipissing Unorganized North part	YES	Any
48 - Nipissing	Nipissing Unorganized South part	NO	To coordinate delivery on an as needed basis
48 - Nipissing	North Bay	YES	Any
48 - Nipissing	Mattawa	YES	Any
48 - Nipissing	Mattawan	YES	Any
48 - Nipissing	Papineau - Cameron	YES	Any
48 - Nipissing	South Algonquin	NO	To coordinate delivery on an as needed basis
48 - Nipissing	Temagami	YES	Any
48 - Nipissing	West Nipissing	YES	Any
49 - Parry Sound	Armour	YES	Any
49 - Parry Sound	Burk's Falls	YES	Any
49 - Parry Sound	Carling	NO	Tuesday & Thursday
49 - Parry Sound	Callander	YES	Any
49 - Parry Sound	Dokis 9 First Nation	NO	Tuesday & Thursday
49 - Parry Sound	French River 13 First Nation	NO	Tuesday & Thursday
49 - Parry Sound	Henvey Inlet 2 First Nation	NO	Tuesday & Thursday
49 - Parry Sound	Joly (Township?)	YES	Any
49 - Parry Sound	Kearney	NO	Tuesday & Thursday

49 - Parry Sound	Machar	YES	Any
49 - Parry Sound	Magnetawan 1 First Nation	YES	Any
49 - Parry Sound	Magnetawan	YES	Any
49 - Parry Sound	McDougall	NO	Tuesday & Thursday
49 - Parry Sound	McKellar	NO	Tuesday & Thursday
49 - Parry Sound	McMurrich/Monteith	NO	Tuesday & Thursday
49 - Parry Sound	Naiscoutaing First Nation	NO	Tuesday & Thursday
49 - Parry Sound	Nipissing Township	YES	Any
49 - Parry Sound	Parry Sound	NO	Tuesday & Thursday
49 - Parry Sound	Parry Sound Unorganized Centre Part (Excluding Britt)	NO	Tuesday & Thursday
49 - Parry Sound	Parry Sound Unorganized, Centre Part (Britt Only)	NO	Tuesday & Thursday
49 - Parry Sound	Parry Sound Unorganized, North East Part	NO	Tuesday & Thursday
49 - Parry Sound	Perry	NO	Tuesday & Thursday
49 - Parry Sound	Powassan	YES	Any
49 - Parry Sound	Ryerson	YES	Any
49 - Parry Sound	Seguin	NO	Tuesday & Thursday
49 - Parry Sound	Shawanaga 17, IRI	NO	Tuesday & Thursday
49 - Parry Sound	South River	YES	Any
49 - Parry Sound	Strong	YES	Any
49 - Parry Sound	Sundridge	YES	Any
49 - Parry Sound	The Archipelago	NO	Tuesday & Thursday
49 - Parry Sound	Whitestone	NO	Tuesday & Thursday
49 - Parry Sound	Wausausking First Nation	NO	Tuesday & Thursday
51 - Manitoulin	Assiginack	NO	Wednesday & Friday
51 - Manitoulin	Billings	NO	Wednesday & Friday
51 - Manitoulin	Burpee and Mills Township	NO	Wednesday & Friday
51 - Manitoulin	Central Manitoulin	NO	Wednesday & Friday
51 - Manitoulin	Cockbrun	NO	Wednesday & Friday (Boat Access - Subject to availability)
51 - Manitoulin	Gordon/Barrie Island	NO	Wednesday & Friday

51 - Manitoulin	Gore Bay	NO	Wednesday & Friday
51 - Manitoulin	Manitoulin, Unorganized, West Part	NO	Wednesday & Friday
51 - Manitoulin	M'Chigeeng First Nation	NO	Wednesday & Friday
51 - Manitoulin	Northeastern Manitoulin and the Islands	NO	Wednesday & Friday (Boat Access - Subject to availability)
51 - Manitoulin	Seguiandah 24 First Nation	NO	Wednesday & Friday
51 - Manitoulin	Sheshegwaning 20 First Nation	NO	Wednesday & Friday
51 - Manitoulin	Sucker Creek 23 First Nation	NO	Wednesday & Friday
51 - Manitoulin	Tehkummah	NO	Wednesday & Friday
51 - Manitoulin	Whitefish River 4 First Nation	NO	Wednesday & Friday
51 - Manitoulin	Wiwemikong First Nation	NO	Wednesday & Friday
51 - Manitoulin	Zhiibaahaasing 19A First Nation	NO	Wednesday & Friday
52 - Sudbury	Baldwin	NO	Wednesday & Friday
52 - Sudbury	Chapleau Township and Chapleau First Nation	NO	Wednesday
52 - Sudbury	Espanola	NO	Wednesday & Friday
52 - Sudbury	French River	NO	Tuesday & Thursday
52 - Sudbury	Killarney	NO	Tuesday & Thursday
52 - Sudbury	Markstay-Warren	YES	Any
52 - Sudbury	Mattagami First Nation	YES	Any
52 - Sudbury	Nairn and Hyman	NO	Wednesday & Friday
52 - Sudbury	Point Grondine 3 First Nation	NO	Tuesday & Thursday
52 - Sudbury	Sables-Spanish Rivers	NO	Wednesday & Friday
52 - Sudbury	St. Charles	YES	Any
52 - Sudbury	Sudbury Unorganized North Part	NO	Within 5 business days - subject to accessibility

52 - Sudbury	Sudbury Unorganized North part (Estaire)	YES	Any
52 - Sudbury	Whitefish Lake 6 First Nation	YES	Any
53 - Greater Sudbury	Capreol	YES	Any
53 - Greater Sudbury	Copper Cliff	YES	Any
53 - Greater Sudbury	Nickel Centre	YES	Any
53 - Greater Sudbury	Onaping Falls	YES	Any
53 - Greater Sudbury	Rayside-Balfour	YES	Any
53 - Greater Sudbury	Valley East	YES	Any
53 - Greater Sudbury	Wahnapitaei 11 First Nation	YES	Any
53 - Greater Sudbury	Walden	YES	Any
54 Timiskaming	Armstrong	NO	Any
54 Timiskaming	Brethour	NO	Any
54 Timiskaming	Casey	NO	Any
54 Timiskaming	Chamberlain	NO	Any
54 Timiskaming	Charlton and Dack	NO	Any
54 Timiskaming	Cobalt	YES	Any
54 Timiskaming	Coleman	YES	Any
54 Timiskaming	Englehart	NO	Any
54 Timiskaming	Evanturel	NO	Any
54 Timiskaming	Gauthier	NO	Any
54 Timiskaming	Harley	NO	Any
54 Timiskaming	Harris	NO	Any
54 Timiskaming	Hilliard	NO	Any
54 Timiskaming	Hudson Township	NO	Any
54 Timiskaming	James	NO	Any
54 Timiskaming	Kerns	NO	Any
54 Timiskaming	Larder Lake	NO	Any
54 Timiskaming	Latchford	YES	Any
54 Timiskaming	Matachewan	NO	Any

54 Timiskaming	Matachewan First Nation	NO	Any
54 Timiskaming	McGarry	NO	Any
54 Timiskaming	Kirkland Lake	YES	Any
54 Timiskaming	Thornloe	NO	Any
54 Timiskaming	Timiskaming, Unorganized East Part	NO	Any
54 Timiskaming	Timiskaming, Unorganized West Part	NO	Any
54 Timiskaming	Temiskaming Shores	NO	Any
56 - Cochrane	Abitibi 70 First Nation	YES	Any
56 - Cochrane	Black River - Matheson	YES	Any
56 - Cochrane	Cochrane Township	YES	Any
56 - Cochrane	Cochrane, Unorganized North Part	YES	Any
56 - Cochrane	Cochrane Unorganized South East	YES	Any
56 - Cochrane	Cochrane Unorganized South West	YES	Tuesday & Thursday
56 - Cochrane	Constance Lake 92 First Nation	NO	Tuesday & Thursday
56 - Cochrane	Fauquier - Strickland	YES	Any
56 - Cochrane	Flying Post 73 First Nation	NO	Fly In
56 - Cochrane	Hearst (including Coppell and Jogues)	NO	Tuesday & Thursday
56 - Cochrane	Iroquois Falls	YES	Tuesday & Thursday
56 - Cochrane	Kapuskasing	NO	Tuesday & Thursday
56 - Cochrane	Mattice - Val Cote	NO	Tuesday & Thursday
56 - Cochrane	Moonbeam	YES	Any
56 - Cochrane	Moosonee, Factory Island, Moose Factory, Fort Albany	NO	Fly-In remote First Nation communities



56 - Cochrane	New Post 69A First Nation	YES	Any
56 - Cochrane	Opasatika	NO	Tuesday & Thursday
56 - Cochrane	Smooth Rock Falls	YES	Any
56 - Cochrane	Timmins	YES	Any
56 - Cochrane	Val Rita - Harty	NO	Tuesday & Thursday
57 - Algoma	Algoma, Unorganized South East Part	NO	Wednesday & Friday
57 - Algoma	Algoma, Unorganized North Part	NO	Within 5 business days - subject to accessibility
57 - Algoma	Blind River	YES	Any
57 - Algoma	Bruce Mines	YES	Any
57 - Algoma	Dubreuilville	NO	Wednesday
57 - Algoma	Elliot Lake	NO	Wednesday & Friday
57 - Algoma	Garden River 14 First Nation	YES	Any
57 - Algoma	Goulais Bay 15A First Nation	YES	Any
57 - Algoma	Gros Cap 49 First Nation	NO	Wednesday
57 - Algoma	Hilton	YES	Any
57 - Algoma	Hilton Beach	YES	Any
57 - Algoma	Horneypayne	NO	Wednesday
57 - Algoma	Huron Shores	YES	Any
57 - Algoma	Johnson	YES	Any
57 - Algoma	Jocelyn	YES	Any
57 - Algoma	Laird	YES	Any
57 - Algoma	Macdonald, Meredith and Aberdeen Additional	YES	Any
57 - Algoma	Mississagi River 8 First Nation	YES	Any
57 - Algoma	Obadjiwan 15E First Nation	YES	Any
57 - Algoma	Plummer Additional	YES	Any
57 - Algoma	Prince	YES	Any
57 - Algoma	Rankin Location 15D First Nation	YES	Any
57 - Algoma	Sault Ste Marie	YES	Any
57 - Algoma	Sagamok First Nation	NO	Wednesday & Friday

57 - Algoma	Serpent River First Nation	NO	Wednesday & Friday
57 - Algoma	Spanish	NO	Wednesday & Friday
57 - Algoma	St Joseph	YES	Any
57 - Algoma	Tarbutt and Tarbutt Additional	YES	Any
57 - Algoma	The North Shore	NO	Wednesday & Friday
57 - Algoma	Thessalon 12 First Nation	YES	Any
57 - Algoma	Thessalon Township	YES	Any
57 - Algoma	Wawa	NO	Wednesday
57 - Algoma	White River	NO	Wednesday
58 - Thunder Bay	Aeroland First Nation	NO	Thursday
58 - Thunder Bay	Conmee	YES	Any
58 - Thunder Bay	Dorion	YES	Any
58 - Thunder Bay	Fort William 52 First Nation	YES	Any
58 - Thunder Bay	Gillies	YES	Any
58 - Thunder Bay	Ginoogaming Nation	NO	Thursday
58 - Thunder Bay	Greenstone	NO	Thursday
58 - Thunder Bay	Gull River 55 First Nation	NO	Monday
58 - Thunder Bay	Lac des Mille Lacs 22A1 First Nation	NO	Tuesday
58 - Thunder Bay	Lake Helen 53 A First Nation	NO	Wednesday & Thursday
58 - Thunder Bay	Lake Nipigon First Nation	NO	Wednesday & Thursday
58 - Thunder Bay	Long Lake 58 First Nation	NO	Thursday
58 - Thunder Bay	Neebing	YES	Any
58 - Thunder Bay	Manitouwadge	NO	Wednesday
58 - Thunder Bay	Marathon	NO	Wednesday
58 - Thunder Bay	Ojibway Nation of Saugeen (Savant Lake)	NO	Thursday
58 - Thunder Bay	O'Connor	YES	Any
58 - Thunder Bay	Osnaburgh 63 A First Nation	NO	Thursday

58 - Thunder Bay	Pays Plat 51 First Nation	NO	Wednesday
58 - Thunder Bay	Pic Mobert North and South First Nations	No	Wednesday
58 - Thunder Bay	Nipigon	NO	Wednesday & Thursday
58 - Thunder Bay	Oliver Paipoonge	YES	Any
58 - Thunder Bay	Pic River 50 First Nation	NO	Wednesday
58 - Thunder Bay	Rocky Bay 1 First Nation	NO	Thursday
58 - Thunder Bay	Red Rock 53 First Nation	NO	Wednesday & Thursday
58 - Thunder Bay	Red Rock Township	NO	Wednesday & Thursday
58 - Thunder Bay	Sand Point First Nation	NO	Thursday
58 - Thunder Bay	Schreiber	NO	Wednesday
58 - Thunder Bay	Shuniah	YES	Any
58 - Thunder Bay	Terrace Bay	NO	Wednesday
58 - Thunder Bay	City of Thunder Bay	YES	Any
58 - Thunder Bay	Thunder Bay Unorganized (East Gorham, Hurkett, Kaministiquia, Nolalu)	YES	ANY
58 - Thunder Bay	Thunder Bay Unorganized Upsala	NO	Tuesday
58 - Thunder Bay	Thunder Bay Unorganized (Heron BayRossport)	NO	Wednesday
58 - Thunder Bay	Thunder Bay Unorganized (Shebandowan)	YES	Any
58 - Thunder Bay	Whitesand First Nation	NO	Monday
59 -Rainy River	Agency 1 First Nation	NO	Wednesday & Friday
59 -Rainy River	Alberton	NO	Wednesday & Friday
59 -Rainy River	Assabaska First Natiom	NO	Wednesday & Friday
59 -Rainy River	Atitokan	NO	Friday

59 -Rainy River	Big Grassy River 35 G First Nation	NO	Wednesday & Friday
59 -Rainy River	Bid Island Mainland 93 First Nation	NO	Wednesday & Friday
59 -Rainy River	Chapple	NO	Wednesday & Friday
59 -Rainy River	Couchiching 16 A First Nation	NO	Wednesday & Friday
59 -Rainy River	Dawson	NO	Wednesday & Friday
59 -Rainy River	Emo	No	Wednesday & Friday
59 -Rainy River	Fort Frances	No	Wednesday & Friday
59 -Rainy River	Lake of the Woods Township	No	Wednesday & Friday
59 -Rainy River	La Vallee	No	Wednesday & Friday
59 -Rainy River	Manitou Rapids 11 Rainy River First Nation	No	Wednesday & Friday
59 -Rainy River	Morley	No	Wednesday & Friday
59 -Rainy River	Neguaguon Lake 25 D (Lac La Croix) First Nation	No	Wednesday & Friday
59 -Rainy River	Rainy Lake 10C,17A, 17B, 26A First Nations	No	Wednesday & Friday
59 -Rainy River	Rainy River Township	No	Wednesday & Friday
59 -Rainy River	Rainy River Unorganized	No	Wednesday & Friday
59 -Rainy River	Saug-A-Gaw-Sing 1 First Nation	No	Wednesday & Friday
59 -Rainy River	Seine River 23 A First Nation	No	Wednesday & Friday
59 -Rainy River	Sturgeon Falls 23 First Nation	No	Wednesday & Friday
60 - Kenora	Bearskin Lake First Nation	NO	Fly-In: Tue, Thu,Sun @12:30 Dep from TBay
60 - Kenora	Cat Lake 63C First Nation	NO	Fly-In: Tue, Thu,Fri @12:30 Dep from TBay
60 - Kenora	Deer Lake First Nation	NO	Fly-In: Mon-Fri @11:40 am Dep from TBay
60 - Kenora	Dryden	YES	Any
60 - Kenora	Eagle Lake 27 First Nation	YES	Any

60 - Kenora	Ear Falls	NO	Wednesday
60 - Kenora	English River 21 (Grassy Narrows) First Nation	NO	Tuesday & Thursday
60 - Kenora	Fort Hope 64 First Nation	NO	Fly-In: Mon-Fri @8:30 Dep
60 - Kenora	Fort Severn 89 First Nation	NO	Fly-In: Mon-Fri @7:40 am Dep from TBay
60 - Kenora	Ignace	NO	Thursday
60 - Kenora	Kasabonika Lake First Nation	NO	Fly-In: Mon-Fri @11:30 am Dep from TBay
60 - Kenora	Kee-Way-Win First Nation	NO	Fly-In: Mon,Wed,Fri @2:55pm, Tue, Thu @3:10 Dep from TBay
60 - Kenora	City of Kenora	NO	Tuesday & Thursday
60 - Kenora	Kenora 38B First Nation	NO	Tuesday & Thursday
60 - Kenora	Kenora Unorganized (Minaki, Reddit)	NO	Tuesday & Thursday
60 - Kenora	Kenora Unorganized(Greater Oxydrift, Wabigoon)	YES	Any
60 - Kenora	Kingfisher Lake 1 First Nation	NO	Fly-In: Mon-Fri @7:40 Dep from TBay
60 - Kenora	Kitchenuhmaykoosib Aaki 84 First Nation	NO	Fly-In: Mon-Fri @11:40 am Dep from TBay
60 - Kenora	Lac Seul 28 FirstNation	NO	Tuesday & Friday
60 - Kenora	Lansdowne House First Nation	NO	Fly-In: Mon-Fri @12:00pm Dep from TBay
60 - Kenora	Neskantaga First Nation	NO	Fly-In: Mon-Fri @12:00 pm Dep from TBay
60 - Kenora	Northwest Angle 33B First Nation	NO	Tuesday & Thursday
60 - Kenora	North Spirit Lake First Nation	NO	Fly-In: Mon-Fri @11:40 am Dep from TBay
60 - Kenora	Machin	YES	Any
60 - Kenora	Marten Falls 65 First Nation	NO	Fly-In: Mon,Wed, Fri @5:00pm Dep from TBay
60 - Kenora	Muskrat Dam Lake First Nation	NO	Fly-In: Mon,Wed, Fri @12:30pm Dep from TBay
60 - Kenora	Osnaburgh 63B First Nation	NO	Thursday

60 – Kenora	Peawanuck	NO	Fly-In: Mon,Wed, Fri Depart Timmins @9:00am
60 – Kenora	Pickle Lake	NO	Thursday
60 – Kenora	Pikangikum 14 First Nation	NO	Fly-In: Mon-Fri @8:30 am Dep
60 – Kenora	Poplar Hill First Nation	NO	Fly In: Mon-Fri @ 12:30
60 – Kenora	Rat Portage 38 A First Nation	NO	Tuesday & Thursday
60 – Kenora	Red Lake	NO	Wednesday
60 – Kenora	Sabaskong Bay 35 D Ojibways of Onigaming First Nation	NO	Tuesday & Thursday
60 – Kenora	Sachigo Lake 1 First Nation	NO	Fly-In: Mon-Fri @ 12:30 Dep from TBay
60 – Kenora	Sandy Lake 88 First Nation	NO	Fly-In: Mon-Fri @ 8:30am Dep from TBay
60 – Kenora	Shoal Lake 34B2, 39A40 Iskatewizaagegan 39 Independent First Nation	NO	Tuesday & Thursday
60 – Kenora	Sioux Lookout	YES	Tuesday & Friday
60 – Kenora	Sioux Narrows- Nestor Falls	NO	Tuesday & Thursday
60 – Kenora	Slate Falls First Nation	NO	Fly-In
60 – Kenora	Summer Beaver First Nation	NO	Fly-In: Mon-Fri @ 7:40 am Dep from TBay
60 – Kenora	The Dalles 38C First Nation	NO	Tuesday & Thursday
60 – Kenora	Wabaseemoong Independent Nations	NO	Tuesday & Thursday
60 – Kenora	Wabauskang 21 First Nation and Perrault Falls	NO	Wednesday
60 – Kenora	Wabigoon Lake 27 First Nation	YES	Any
60 – Kenora	Wapekeka 2 First Nation	NO	Fly-In: Mon-Fri @ 7:40 am Dep from TBay
60 – Kenora	Wawakapewin First Nation	NO	Fly-In

60 – Kenora	Weagamow Lake 87 First Nation	NO	Fly-In: Mon-Fri @ 12:30pm Dep from TBay
60 – Kenora	Whitefish Bay32 A Naotkamegwaning First Nation	NO	Tuesday & Thursday
60 – Kenora	Whitefish Bay 33A Northwest Angle 33 First Nation	NO	Tuesday & Thursday
60 – Kenora	Whitefish Bay 34 A Animakee Wa Zhing 37 First Nation	NO	Tuesday & Thursday
60 - Kenora	Wunnumin 1 First Nation	NO	Fly-In: Mon-Fri from TBay

#### Medigas

385 Bentley Street, Markham, Ontario L3R 9T2

Phone 416-365-1700, [www.medigas.com](http://www.medigas.com)

Disclaimer: Medigas has no control whatsoever as regards to performance or non-performance, misinterpretation, proper or improper use of any information or suggestions by any person or any entity and Medigas expressly disclaims any liability in connection thereto. Medigas is a company name used by Linde Canada Inc. and its affiliates. Medigas and the Medigas cross design are trademarks or registered trademarks of Linde plc or its affiliates. Copyright © 2011, 2021. Linde Canada Inc.